

eDues

SAFE | SECURE | EASY

eDues is the new way for union members to automatically pay dues.

All members must make the switch to eDues to maintain their membership and protect their union contract.

Why? Despite massive opposition from workers across Florida, the Legislature passed SB 256 which outlaws payroll deduction of public employees' union dues.

The Legislature is trying to silence educators and roll back our rights, but we won't let them.

Tens of thousands of members like you are standing up for their profession and protecting the gains won through their local union contract.

By **switching to eDues** those members are saying loudly: **I'M STICKING WITH MY UNION!**

Learn more on this page: [How do eDues work?](#) [Members are saying "I'm sticking with my union!"](#) [Why now? Why is this happening?](#)

[Frequently Asked Questions about eDues](#)

eDues is safe

eDues uses **Plaid**, an industry-leader in account verification used by platforms like Venmo, to facilitate communication between your bank and your local union's bank. This is done through an ACH (Automated Clearing House) payment — the same method most districts use to deposit your paycheck in your bank account. Plaid maintains secure connections to more than 12,000 financial institutions globally.

eDues is secure

Your local union and FEA do not store any of your banking information and are not directly involved in the eDues transaction.

At no point is your banking information in the hands of any local union or FEA representative or employee. Your local union only sees the payments and who is making them, not any protected information.

eDues is easy

Most members complete the switch to eDues in about 5 minutes by using their online banking credentials or their account number and bank routing number.

eDues is strength in numbers

From wages to health insurance, working conditions to job security, nearly every part of our work lives is covered by the contract your bargaining team — made up of members like you — negotiates with the school district. **If you don't make the switch to eDues you will lose your membership and put your local contract at risk for everyone.**

eDues is private

Your local school district no longer has access to who is a union member. And neither FEA nor your local union store any of your banking information.

eDues is consistent

eDues payments occur on the same schedule as your dues are currently deducted from your paycheck. You only have to connect your bank account once.



Your local union is working hard to roll out eDues!

You'll be hearing from them soon about making the switch — if you haven't already. Please contact your local with any questions using the tool below.

Select County

Select Job

FIND MY LOCAL

[BACK TO TOP](#)



[BACK TO TOP](#)

Why is this happening?

SB 256 is nothing more than an attack on our collective voice and our unions.

The bill strips educators and most other public employees — police and firefighters are not included — of the right to voluntarily pay your union dues through payroll deduction and raises the threshold of membership required to maintain local bargaining rights to 60%.

None of the hundreds of other payroll deductions across the state — like for health insurance or the United Way — are affected.

As union members, we value our right to join together to advocate for our students and our professions. This new law puts our union at risk — along with our negotiated contracts and legal protections at work.

This type of “paycheck deception” legislation is nothing new and has been wielded across the country to weaken unions and roll back working conditions. It's no secret this legislation is designed to diminish our collective voice.

But members across Florida are not fooled. They are staying united, switching to eDues and saying proudly: **“I'm Sticking With My Union!”**



431

workers from across Florida spoke against SB 256.

31

people spoke for SB 256.

“Every single one of you workers is against this bill. It's interesting that the last three [and only] speakers [for the bill] were men in suits from think tanks and not actually people who are affected by this bill.”

— Sen. Tina Polsky (D-Boca Raton) speaking during SB 256's first committee hearing.

[BACK TO TOP](#)

Frequently Asked Questions about eDues

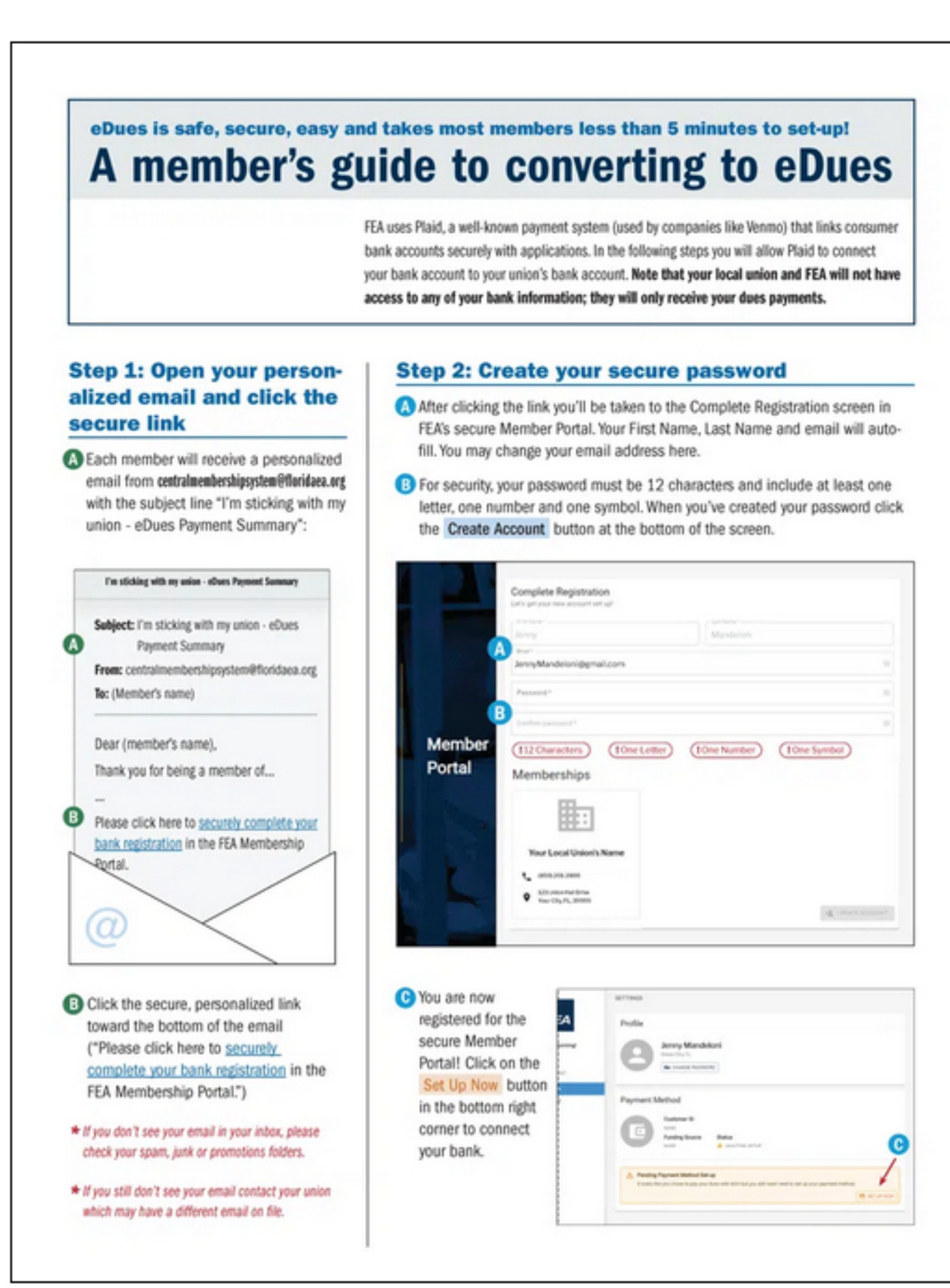
SWITCHING TO eDUES	eDUES 101
1 How do eDues work?	1 Why is our union changing the way we pay dues?
2 How do I sign up for eDues?	2 Why did Florida lawmakers outlaw payroll deduction?
3 How long does it take to switch to eDues? What will I need?	3 What are eDues?
4 What if I did not receive my personalized eDues invite email?	4 Why should I switch to eDues?
5 Does the personalized eDues invite email expire?	5 Are there additional benefits for signing up for eDues?
6 Can I reuse the link in the invite email to get back into the portal?	6 What happens if I don't switch to eDues?
7 I've followed the instructions, but what if still need help signing up to eDues?	7 What happens to our union if other members don't switch to eDues?
8 What is a microdeposit?	8 Even if our union doesn't exist, I'll still have my contract, right?
9 How do I find my microdeposit code?	
10 Where do I go to enter my microdeposit code?	
11 Where do I go to complete my registration or change my information?	
12 Can I sign up for eDues without using my online banking credentials?	
13 Can I sign up for eDues if I don't do online banking?	



Switching to eDues

How do eDues work?
eDues work the same way you use online banking to pay other bills, membership or subscriptions.
eDues uses Plaid , an industry-leader in account verification used by platforms like Venmo, to facilitate communication between your bank and your local union's bank. Plaid maintains secure connections to more than 12,000 financial institutions globally.
This is done through an ACH (Automated Clearing House) payment — the same method most districts use to deposit your paycheck in your bank account.
How do I sign up for eDues
How long does it take to switch to eDues? What will I need?
What if I did not receive my personalized eDues invite email?
Does the personalized eDues invite email expire?
Can I reuse the link in the invite email to get back into the portal?
I've followed the instructions, but what if still need help signing up to eDues?
What is a microdeposit?
How do I find my microdeposit code?
Where do I go to enter my microdeposit code?
Where do I go to complete my registration or change my information?
Can I sign up for eDues without using my online banking credentials?
Can I sign up for eDues if I don't do online banking?

More eDues resources



A step-by-step guide — with screenshots — of the eDues conversion process.

[Download PDF](#)

eDues 101

Why is our union changing the way we pay dues?
Why did Florida lawmakers outlaw payroll deduction?
What are eDues?
Why should I switch to eDues?
Are there additional benefits for signing up for eDues?
eDues protects your privacy. Paying union dues via payroll deduction allows school districts and school boards to view employees' membership status, opening educators to targeting and retaliation. Paying union dues via bank transfer allows members to keep their union membership private from administrators.
What happens if I don't switch to eDues?
What happens to our union if other members don't switch to eDues?
Even if the union doesn't exist, I'll still have my contract, right?

[BACK TO TOP](#)

QUICK LINKS

Home
Join Your Union
Take Action
Contact FEA



CONTACT

213 South Adams Street
Tallahassee, Florida 32301
889-801-8007
850-201-2800

JOIN THE MOVEMENT SIGN UP FOR EMAIL ALERTS

ABOUT FEA

The Florida Education Association is the state's largest association of public employees, with more than 120,000 members. We are affiliated nationally with the **American Federation of Teachers (AFT)**, the **National Education Association (NEA)** and the national **AFL-CIO**.

ADA COMPLIANCE POLICY: The Florida Education Association is committed to keeping our site accessible to everyone. **We welcome feedback on ways to improve the site's accessibility** so it is easy for everyone to navigate.